

RE Practices in Nepal - Solar Energy Technologies Solar Home Systems (SHS)



Lotus Energy Solar Home Systems & PV Power House Solar Home System

Features:

- Applications:
Ideal for rural homes, small office electrification, remote cabins, tool sheds, health clinics, emergency backup power, mobile power supply, village schools and indoor handicraft manufacturing.
- Usage:
Radios, TVs, LED reading lights and even low voltage kitchen appliances.
- Lotus Energy's Powerhouse:
This is a neat and easy solution for using your SHS. It integrates battery, charge controller, battery testing dial, switch panel and DC outlets in one easy wall mounted unit. All dials and switches are self explanatory even for children and illiterate adults.

Available in following sizes:

PSHS 10	Portable Solar Home System 10W
PSHS 20	Portable Solar Home System 20W
SHS 20A	SHS with Powerhouse, Sundaya Battery & 2 lights
SHS 20B	SHS with Steca Charge Controller, Sundaya Battery & 2 Lights
SHS 36A	SHS with PV Powerhouse, Trojan Battery & 4 Lights
SHS 36B	SHS with PV Powerhouse, Sundaya Battery & 4 Lights
SHS 36C	SHS with Steca Charge Controller, Sundaya Battery & 3 Lights
SHS 40A	SHS with PV Powerhouse, Trojan Battery & 4 Lights
SHS 40B	SHS with PV Powerhouse, Sundaya Battery with 4 Lights
SHS 40C	SHS with Steca Charging Controller, Sundaya Battery & 3 lights
SHS 50	SHS with PV Powerhouse, Trojan Battery & 5 Lights
SHS 75	SHS with PV Powerhouse, Trojan Battery & 8 Lights
SHS 100	SHS with PV PowerHouse, Trojan Battery & 10 Lights

Source:

Lotus Energy

1249 Thirbam Sadak - 3, P.O. Box 9219 Bhatbhateni

Tel: +977 (1) 4418 203 Fax: + 977 (1) 4412 924, Kathmandu, Nepal

<mailto:info@lotusenergy.com> : Web: <http://www.lotusenergy.com>

RE Practices in Nepal - Solar Energy Technologies

Portable Solar Home Systems(PSHS) by Lotus Energy



Available Sizes:

PSHS7	Portable Solar Home System with 7Ah Battery
PSHS24	Portable Solar Home System with 24Ah Battery

Features of Lotus PSHS:

- Complete supply & storage units to supply DC loads.
- Easy to install - just plug in the solar module and the load.
- Sealed lead acid battery with inbuilt high class charge controller
- Integrated voltage controller
- Battery is well protected against over charging as well as deep discharging.
- State of charge display.
- Can operate small radios, cassette players, laptops or other portable 12 V electronic goods.
- Easy to carry

Specifications:

Type	PSHS7	PSHS24
Solar Module	3-10Wp	10-30Wp
Battery Capacity	6.5Ah	24Ah
Max. Module Current	2A (approx. 30Wp)	2A (approx. 30Wp)
Nominal Voltage	12V	12V
Number of Module Inlets	1	1
Number of 12V Outlets	2	2
Number of 3/6/9V Outlets	1	1
Load Current of 12V outlets	2A	2A
Load Current of 3/6/9V Outlets	200/300/500 mA	200/300/500 mA
Dimensions	79x185x208 mm	140x235x315 mm
Weight	3.2kg	9.7 kg

Source:

Lotus Energy

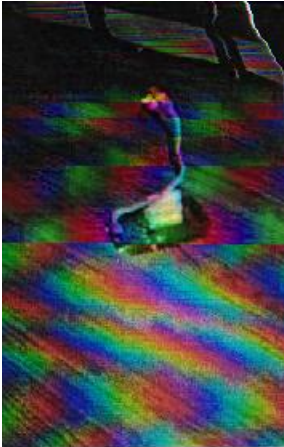
1249 Thirbam Sadak - 3, P.O. Box 9219 Bhatbhateni

Tel: +977 (1) 4418 203 Fax: + 977 (1) 4412 924, Kathmandu, Nepal

mailto:info@lotusenergy.com Web: <http://www.lotusenergy.com>

RE Practices in Nepal - Solar Energy Technologies

White LED Based Domestic Lighting System for Rural Nepal - TUKIMARA Lamp



Advantages of White LED Lamp Set

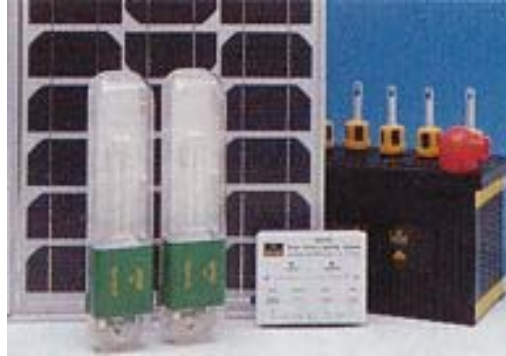
- It creates bright and smoke-free conditions in rural kitchen. That is why women like it very much.
- It can be easily used as torchlight.
- There is no danger of fire-outbreak as compared to kerosene lamp. So it is safe even when handled by the children.
- It has been found quite suitable for use in hotels of rural areas.
- Recharging of the battery needs to be done only for a period of 2 to 3 hours after every 3 or 4 days of use.
- Recharging can be easily done by a 1 Wp solar PV module or by a small bicycle dynamo powered by a tiny pelton water turbine or by pedal power pack operated by human beings.
- Reliability of the lamp system is very high, as less electronic components are used in the lamp construction.
- It does not produce radio frequency to interfere with communication equipment or radio.
- It is polarity protected, so it is hard to make an installation error.
- It can be placed in abusive environment.
- It is not easily breakable.

For more details, please contact:

Centre for Renewable Energy
Ga-2/717, Bag Bazar
Kathmandu, Nepal
P.O. Box 589
(Near Hotel Ganapati, Bag Bazar)
Phone No. +977-1-248852/351052
E-mail: < cre@ccsl.com.np >

RE Practices in Nepal - Solar Energy Technologies

Solar Home Lighting Systems



Product Details:

- 40 W Solar Module 01 No
- Lamps 04 Nos.
- 75Ah Solar Deep Cycle Battery 01 No.
- Charge Controller 12V, 10A 01 No.
- Support Structure and Cables 01 set

Product Details:

- 20 W Solar Module 01 No
- Lamps 03 Nos.
- 40Ah Solar Deep Cycle Battery 01 No.
- Charge Controller 12V, 10A 01 No.
- Support Structure and Cables 01 set

Source:

Kathmandu Power Company Pvt Ltd.

Post Box No: 21533

Kathmandu, Nepal.

Telephone Number: + 977-1-4462716

Fax Number: + 977-1-4357095

Cell Phone: + 977-9851023228

Email info@kpc.com.np

Website: www.kpc.com.np

RE Practices in Nepal - Solar Energy Technologies

Solar Home Lighting Systems



Solar Home Lighting Systems



Solar Street Lighting Systems

Product Details:

- 12 W Solar Module 01 No
- Lamps 02 Nos.
- 40Ah Solar Deep Cycle Battery 01 No.
- Charge Controller 12V, 10A 01 No.
- Support Structure and Cables 01 set

Product Features:

- Several Models
- High efficiency PV Batteries
- Galvanized Steel Poles
- Auto on/ off, dusk to dawn operation
- Minimum maintenance

Source:

Kathmandu Power Company Pvt Ltd.

Post Box No: 21533

Kathmandu, Nepal.

Telephone Number: + 977-1-4462716

Fax Number: + 977-1-4357095

Cell Phone: + 977-9851023228

Email info@kpc.com.np

Website: www.kpc.com.np

RE Practices in Nepal - Solar Energy Technologies

Medical Refrigerator



Product Features:

- Reliable, durable and simple to operate
- Hygienic, easy to clean
- Designed, tested and certified to WHO specification
- Pre- set Vaccine storage at 0 - 8 degree centigrade

Source:

Kathmandu Power Company Pvt Ltd.

Post Box No: 21533

Kathmandu, Nepal.

Telephone Number: + 977-1-4462716

Fax Number: + 977-1-4357095

Cell Phone: + 977-9851023228

Email info@kpc.com.np

Website: www.kpc.com.np

RE Practices in Nepal - Solar Energy Technologies

Water Pumping System



Product Features:

- Can lift water from depth up to 50 m (166 ft) and deliver up to, 35000 liters/ day.
- 3 position manual tracking.
- Easy to install, minimum maintenance and completely serviceable.

Source:

Kathmandu Power Company Pvt Ltd.

Post Box No: 21533

Kathmandu, Nepal.

Telephone Number: + 977-1-4462716

Fax Number: + 977-1-4357095

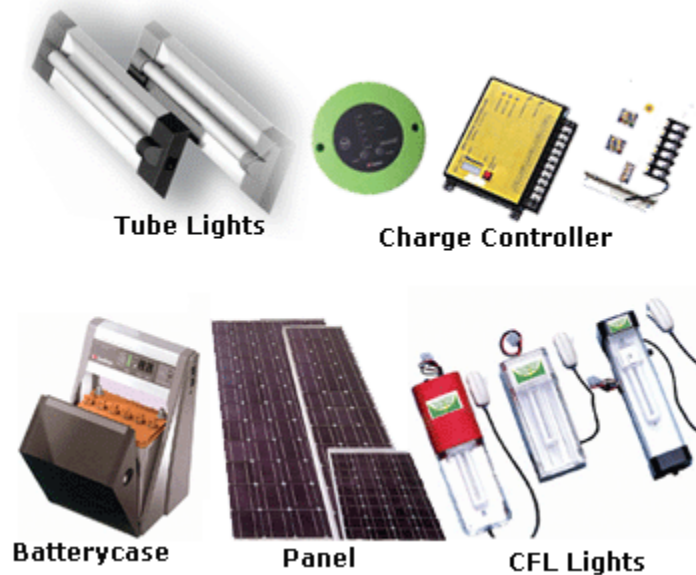
Cell Phone: + 977-9851023228

Email info@kpc.com.np

Website: www.kpc.com.np

RE Practices in Nepal - Solar Energy Technologies

Solar PV Systems & Accessories



The Products:

- The focus is on different sizes of solar home systems.
- Depending on the need, it is possible to install a One Light Portable System to full Solar Powered Office in remote areas.
- Solar modules, batteries, charge controllers, lights and other components imported from different countries are the products which are reliable, durable and affordable.
- Offered are SHS from 10/12 watts to 100 watts or bigger which lights up from 2 to 10 (or more) lights respectively.
- Bigger systems can easily run BW/Colour television, radio/cassette/CD/VCD, telephones and other appliances.
- In addition, Solar water pumps, Solar street lighting systems, Solar powered systems at remote offices, portable solar powered systems for trekking purposes, etc. are also available.
- Solar modules contain a warranty of 10 to 25 years, battery contain 2 years warranty. Other electronic components carry a 2 year warranty.

Source:

Sunshine Energy Pvt. Ltd.

Samakhushi - Kathmandu.

Phone: 00977 1 4353538, 00977 1 6212444, Fax: 00977 1 4355347

Email: info@sunshine.com.np

Website: <http://www.sunshine.com.np/index.html>

RE Practices in Nepal - Solar Energy Technologies

Solar PV Systems & Accessories

Products of Solar Electricity Co (Pvt) Ltd, Kathmandu, Nepal - established 1991



Charge Controller



DC/DC Converter



10W Energy Efficient Fluorescent Lamp



A complete, basic solar home system designed & ready for installation by SEC

Products

Manufacturer of electronics to support photovoltaic systems using indigenous technology, including

- charge controllers
- DC ballast lights
- DC/DC Converters
- small inverters
- white LED lamps
- solar lanterns
- the company has manufactured 50,000 lights, 12,000 Charge controllers, 8000 DC/DC Converters

Source:

Solar Electricity Co (Pvt) Ltd
Kathmandu, Nepal
Yug Tamrakar
Solar Complex, Baghbazar- 31,
Kathmandu, Nepal
Telephone : 977-1-225253, 227876
Fax: 977-1-352653; or 223851
email : ises@healthnet.org.np
web: <http://sec.digital-culture.net>

RE Practices in Nepal - Solar Energy Technologies

Solar PV Systems & Accessories

Sun Power Pvt. Ltd.
Complete Solution of Solar & Renewable Energy

NEVER IN THE DARK

सौर्य बत्ति

सौर्य लानटिन

इन्भर्टर

नयाँ प्रविधिको बायो ग्यास

ग्रामिण बिद्युतीकरणको लागि गुणस्तरीय अस्पदो, टिकाउ सौर्य बिद्युतीय उपकरणहरु

बालुवाटार, काठमाण्डौ, नेपाल, पो.ब.नं. ४११२, टेलिफोन: ९७७ (१) ४४२६६५८, ४४४०३५४, email: info@sunpower.wlink.com.np

No details available

Source:

Sun Power Pvt. Ltd.

GPO Box : 4912, Baluwatar, Kathmandu, Tel: 4440354, 4426658

Email: info@sunpower.wlink.com.np

www.nepalpages.com/sunpower

RE Practices in Nepal - Solar Energy Technologies

Solar PV Systems & Accessories



Products of Scientific Technology

- Solar PV systems
- Solar Photovoltaic Module
- Solar Deep Cycle Battery
- Solar Charge Controller
- Solar Multiple Voltage Regulator (SMVR)
- Solar Light (Compact Fluorescent Lamp, Fluorescent Tube Lamp)
- Solar Lantern
- Solar Power Converters
- Solar Water Pumps

PV Modules - Available sizes

- BP 12-Watt PV Module (Tata Co. India)
- KC 20-Watt PV Module (Kyocera Japan)
- BP 20- Watt PV Module (Tata Co. India)
- KC 40-Watt PV Module (Kyocera Japan)
- BP 40- Watt PV Module (Tata Co. India)
- KC 51-Watt PV Module (Kyocera Japan)
- KC 60-Watt PV Module (Kyocera Japan)
- BP 75- Watt PV Module (Tata Co. India)
- BP 70- Watt PV Module (Tata Co. India)
- KC 80-Watt PV Module (Kyocera Japan)

Solar Deep Cycle Batteries-Available sizes

- 6SB 40 Volta Deep Cycle Battery 12V/40AH@20HR
- 6SB 65 Volta Deep Cycle Battery 12V/75AH@20HR
- 6SB 100 Volta Deep Cycle Battery 12V/100AH@20HR
- YBL 128 Volta Deep Cycle Battery 12V/100AH@20HR

SCIENTIFIC TECHNOLOGY Pvt. Ltd.

Technical Service Support

P.O.Box: 8975, EPC 5610

Kathmandu, Nepal

Tel: ++977-1-4423638, 4419179

Fax: ++977-1-4410364

Email: scitech@ntc.net.np

info@scientifictechnology.com

service@scientifictechnology.com

www.scientifictechnology.com.np

RE Practices in Nepal - Solar Energy Technologies

Solar PV Energy Technologies

Solar Garden Light



FEATURES:

- Available in different models, complete with Solar Module , Battery, Luminaries and Mounting Cables
- High efficiency Inverter and Charge Regulator
- Adjustable Solar Panel converts Solar energy into DC power
- Power stored in the Battery ,automatically lights up the system at the Dusk
- Pre-set operation time
- Auto ON at night, OFF in the morning
- Easy to install and maintain
- Minimum maintenance.

APPLICATIONS:

Residential and Commercial buildings, Hospitals, Hotels, Banks, Military Camps, Schools, Parks, etc.

Solar Lantern with AM/FM Radio



FEATURES:

- Bright , Omni-directional light
- Alternative charging via Solar Module or AC mains
- AM/FM radio Frequency
- Dual system, light and radio
- Facility for replacement of tubes / bulbs
- 1.4 W mono panel packed in the same unit
- One piece of cigarette light plug and AC charging adapter are attached as accessories
- At least one charging is necessary in two months over long period of disuse in order to protect the storage Battery
- The ESL can be taken apart while Lantern not use, but should put the switch to "OFF" Available in different models and colors if order comes big.

APPLICATIONS:

As it can be carried conveniently where ever light is required, its applications are unlimited

Solar PV Modules: [10W, 20-37W, 50W, 75W, 100W – Make TITAN](#)

Source:

Krishna Grill & Engineering Works (PVT.) LTD.
www.krishna.grill.free.fr

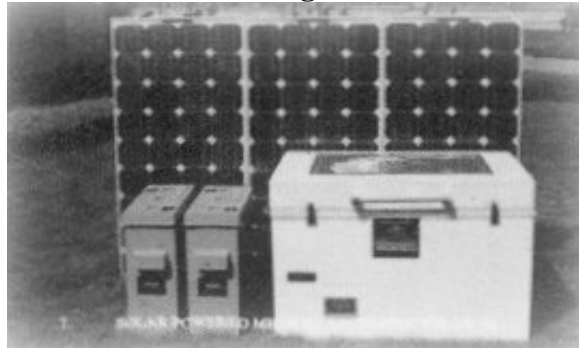
RE Practices in Nepal - Solar Energy Technologies

Solar PV Energy Technologies

Solar Water Pump



Solar Refrigerator



FEATURES:

- Zero operation cost
- Minimum maintenance
- High reliability
- Automatic operation and easy installation
- Specific user adaptability and flexibility
- Long life
- Most benefit to environment
- Hygienically sound
- Economic development
- Available as per design demand, Surface or submersible pumps.

APPLICATIONS:

Most attractive solution in rural remote areas for irrigation, rural water supply even in urban village areas where no power Grid or deficient in energy resources.

FEATURES:

- Reliable ,durable and simple to operate
- Designed, tested and certified to WHO specifications
- Hygienic, Easy to clean
- 40 liters, gross refrigerator volume and 5 liters gross ice packing capacity
- Pre-set vaccine storage at 0 –8 degree centigrade
- Minimal maintenance.

APPLICATIONS:

Human vaccine storage, animal vaccine storage, general medicine storage, etc. Even one can use for Domestic purpose.

Solar PV Modules: [10W, 20-37W, 50W, 75W, 100W – Make TITAN](#)

Source:

Krishna Grill & Engineering Works (PVT.) LTD.
www.krishna.grill.free.fr

RE Practices in Nepal - Solar Energy Technologies

Solar PV Energy Technologies

Solar Street Light

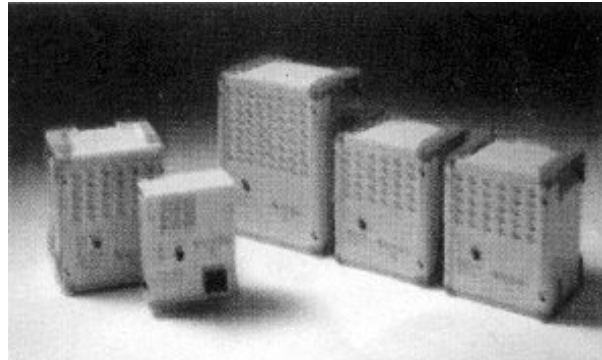
**FEATURES:**

- Bright light
- 3 –4 days no sun autonomy
- Available in different models
- High efficiency PV Batteries
- Galvanized steel poles
- Pre-set operation time
- Auto ON/OFF, dusk to dawn operation
- Ready to install
- Minimum maintenance
- Integrated designs
- Unique total system warranty.

APPLICATIONS:

Street, Yard, Security, Housings Colonies, Townships Lighting , Parks etc.

Power Inverter

**FEATURES:**

- High Performance, Reliability
- The full bridge circuit to ensure the high efficiency rating in min energy loss
- Makes standardization at 230/120V possible
- Totally protected
- Built-in soft-start enables problem free starting up of heavy loads
- Digital clocks continue to give the correct time: no more deviations from quartz control
- Clear sine wave-voltage makes universal usage possible
- Compact, noise-free and light-weight
- Available in different models.

APPLICATIONS:

Ideal for Domestic, Commercial, Industries, Solar Energy, Emergency Power Systems. For e.g.TV/VCR, Ni Cd Battery Charger, Personal Computer/Laptop, Drilling Machines, P.L Lighting, Small Kitchen Appliances, Refrigerator, Micro Wave Oven, Coffee Maker, Hair Dryer, Pump, Heavy Tools etc.

Solar PV Modules: [10W](#), [20-37W](#), [50W](#), [75W](#), [100W](#) – [Make TITAN](#)

Source:

Krishna Grill & Engineering Works (PVT.) LTD.
www.krishna.grill.free.fr

RE Practices in Nepal - Solar Energy Technologies

Solar PV Energy Technologies

Solar Fan with Light



Portable Power Station



FEATURES:

- 10 inches fan with emergency light
- Long life and free maintenance Lead Acid Battery
- Design with over heat auto protection and fall-down safety switch
- Dual systems with fan and light
- Various charging methods: by solar panel and AC mains
- Portable, light in weight.

APPLICATIONS:

Being dual system it has got unlimited application.

FEATURES:

- 250 Amp cold cranking power out put
- Built –in – 250 Amp booster cable to jump start your car
- Dual cigarette lighter socket out puts
- Regulated 3v, 6v & 9v, 2 Amp power supply out puts for notebook Computer, CD player, Mobile Phone, etc.
- Diagnostic LED display
FULL/CHARGE/LOW/ GOOD INDICATION
- Emergency light with flashing function
- Sealed Lead-Acid maintenance free rechargeable Battery
- Complete with plug to plug connector and home AC charging Adapter.

Solar PV Modules: [10W](#), [20-37W](#), [50W](#), [75W](#), [100W](#) – Make TITAN

Source:

Krishna Grill & Engineering Works (PVT.) LTD.
www.krishna.grill.free.fr

RE Practices in Nepal - Solar Energy Technologies

Solar PV Systems and Accessories, Nepal



Vaccine refrigerator
(12/24V DC)



EcoLite – CFL (2W, 4W)



12V, 20Ah to 200Ah



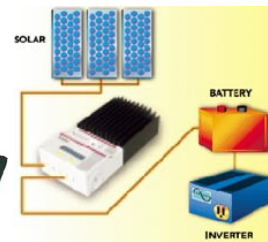
Charge controllers (SHS)



Charge controllers
(Sun Keeper)



Charge controllers
(Sun Saver)



Charge controller
(TriStar)



Charge controller
(ProStar)

Product Line:

- Solar Modules – Kyocera – 11 models (16W to 200W)
- CEL's Solar PV Modules – 8 modules (10W to 75W)
- Charge controllers
- Inverters
- Deep cycle batteries
- DC lamps
- Vaccine refrigerator
- Solar water pump

Detailed information (too numerous to mention here) are available in their web site.

Energy International Pvt. Ltd.

Barahi Marga, Jwagal, Kupondol-10, Lalitpur, Nepal

Tel.: +977-1-5543482

E-mail: info@energy-international.com

Website: www.energy-international.com

Qualified Manufacturing Solar PV Companies

S. N.	NAME OF THE COMPANY	CONTACT PERSON	FULL ADDRESS	P. O. BOX.	PHONE NO.
1	Alternative Energy Resources Nepal Pvt. Ltd.	Raj Kumar Pandey (9851020873)	Gairidhara Chowk, Kathmandu areolex@wlink.com.np	19404	4416701, 4418893
2	Bio Energy Pvt. Ltd.	Deepak Bd. Shahi (9858021150)	Balaju Chowk, Kathmandu bioenergy@ntc.net.np	9802	01-6225310, 081-26837, 081-550580
3	Bionic Energy Pvt. Ltd.	Bhuminanda Baral (98510 85606)	Goushala, Kathmandu aedc@ecomail.com.np	9813	01-2003356
4	Dhaulagiri Solar and Electronics Company	Kiran Gautam (9851089480)	Balaju, Kathmandu dhaulagirisolar@ntc.net.np	1815	01-4365376, 012093109
5	Energy and Construction Company Pvt. Ltd.	Bhuwan Karki (9851018063)	Kalanki, Kathmandu eccnepal@ntc.net.np		16220189
6	Energy International Pvt. Ltd.	Nabin Prakash Dhar (9851027061)	Jawal, Lalitpur –		5543482
7	Everest Solar Energy pvt. Ltd.	Sing Raj Ghale (9851013280)	Gogabu, Tokha Road, Kathmandu ese@ntc.net.np	8974	4360086
8	Kathmandu Power Company Pvt. Ltd.	Shailesh K.C (9851076627)	Shanti Nagar, Baneshowar, kathmandu info@kpc.com.np	21533	4373572, 01-2111162
9	Krishna Grill and Engineering Works Pvt. Ltd.	L.M Rajbhandari	Bhumiparsasan Chowk, Biratnagar kgktc_brt@wlink.com.np	150	021-525492, 021-535904
10	Lasersun Energy Pvt. Ltd.	Pushkar Nath Bhattarai (9851007786)	Pulchowk Lalitpur lasersun@wlink.com.np	9952	5536171, 5549607
11	Lek Bensi Sourya Urja Tatha Gobar Gas Sewa Company	Dhurba Bhandari (9841835388)	Rupandhei, Butwal –		071-540074, 4384725
12	Lotus Energy Pvt. Ltd.	Puran Rai (9851036736)	Bhatbhateni, Kathmandu info@lotusenergy.com	9219	4418203
13	Nabajyoti Urja Pvt. Ltd.	Deepak Humagai (9851047869)	Maharajung, Chakrapath, Kathmandu info@nabajyotiurja.com	19655	4721741
14	Nepal Energy Development Company Pvt. Ltd.	Praksh Chandra Shrestha	Bharatpur-10, Chitawan nedco@techminds.com.np	26 Chitwan	56521563
15	Perennial Energy Nepal Pvt. Ltd.	Anup Bajracharya (9851059600)	Thribam sadak, Naxal, Kathmandu info@pen.com.np	4395	4414363
16	Rural and Alternative Energy Pvt. Ltd.	Prakesh Chandra Subedi (9851045892)	Tanahu, Vyas Municipalaty-11 resurja@ntc.net.np		065-560573, 5010516
17	Scientific Technology Pvt. Ltd.	Gyanu Mahoto (9851035809)	Tangal, Kathmandu scientific@wlink.com.np	8975	4423638, 4419179
18	Solar Electricity Company Pvt. Ltd.	Yug Ratna Tamrakar (9851022649)	Bagbazar, Kathmandu ises@healthnet.org.np	12515	4225253
19	Sprint International Pvt. Ltd.	Prachanda Man Shrestha (9851075736)	Baluwatar, Kathmandu sprint@wlink.com.np	23163	4430417
20	Sun Power Pvt. Ltd.	Chandreswar Chaudhary	Baluwatar, Kathmandu info@sunpower.com.np	8975	4440354, 4426658

		(9851047107)			
21	Sunshine Energy Pvt. Ltd.	Uttam Sitaula (9851047868)	Samakhushi, Kathmandu info@sunshine.com.np	23238	4353538
22	Suryodaya Urja Pvt. Ltd.	Nabin Bhujel (9851040404)	Bhapasi VDC-2, Lilanagar info@suryodaya.wlink.com.np	10233	4379000
23	Suryojyoti Company Pvt. Ltd.	Kalpana Acharya (9841241862)	Newroad, Guccha tole, Kathmandu suryajyoti@hons.com.np	13779	01-4249255, 4249719
24	Swabhiman Urja Bikash Company Pvt. Ltd.	Hira Bahadur K.C. (9851087947)	Mahandra path Baglung kchira2000@yahoo.com		068-520818, 068-520718
25	Swogun Energy pvt. Ltd.	Gokul Khadka (9841390797)	Samakhushi, kathmandu swogun@vianet.com.np	10167	4362505
26	Urja Ghar Pvt. Ltd.	Indra Khanal (9851093223)	Balaju, Devakota Margh, Kathmandu sanramjan@yahoo.com	6761	4384725

Other Organizations

NAME OF THE ORGANIZATION	CONTACT PERSON	FULL ADDRESS
Integrated Rural Development Services (IRDS)	Keshab K.C	Balkhu-14, Ringroad, Kathmandu, KMC-14 Tel: 977-01-4279111 met@irds.wlink.com.np
Universal Consultancy Services Pvt. Ltd. (UCS)	Govinda P.Devkota	Banasthali, Balaju, Kathmandu,16 Tel: +977-01-4350580 ucs@ntc.net.np
Technology and Rural Upliftment Service Team (TRUST) Pvt. Ltd.	Pramila Shrestha	Jawalakhel, Manbhawan, Lalitpur,22 Tel: 977-01-5527068 trust@htp.com.np
C-ZONE HVAC Incorporate Pvt. Ltd	N. R Karki	352 Panchakumari Marg, New Baneswor, Kathmandu-34; Tel: +977-01-4496522 czone@wlink.com.np
EastConsult (P) Ltd.	Susil K. Shrestha	Hotel Marg, Lazimpat, Kathmandu-2 Tel: +977-1-4413267, 4412062 eastco@wlink.com.np
BISCONS Development and Management Consultants	Ramesh M. Singh	Adwait Marg, Bagbazar, Kathmandu Tel: +977-1-4227470 rmsingh@biscons.wlink.com.np
Balaju Technical Training Centre (BTTC)		Balaju, Kathmandu, Nepal Tel: +977-1-4350213, 4350228 balaju@btcc.wlink.com.np
Centre of Energy Studies CES)/Institute of Engineering/Tribhuvan University		Pulchowk, Lalitpur, Nepal Tel: +977-1-5532235 casioe@healthnet.org.np

Source:

Alternative Energy Promotion Centre (AEPC)

Khumaltar, Lalitpur

Tel: 5539391; Fax 5542497

Email: aepec@aepec.gov.np ; www.aepec.gov.np